

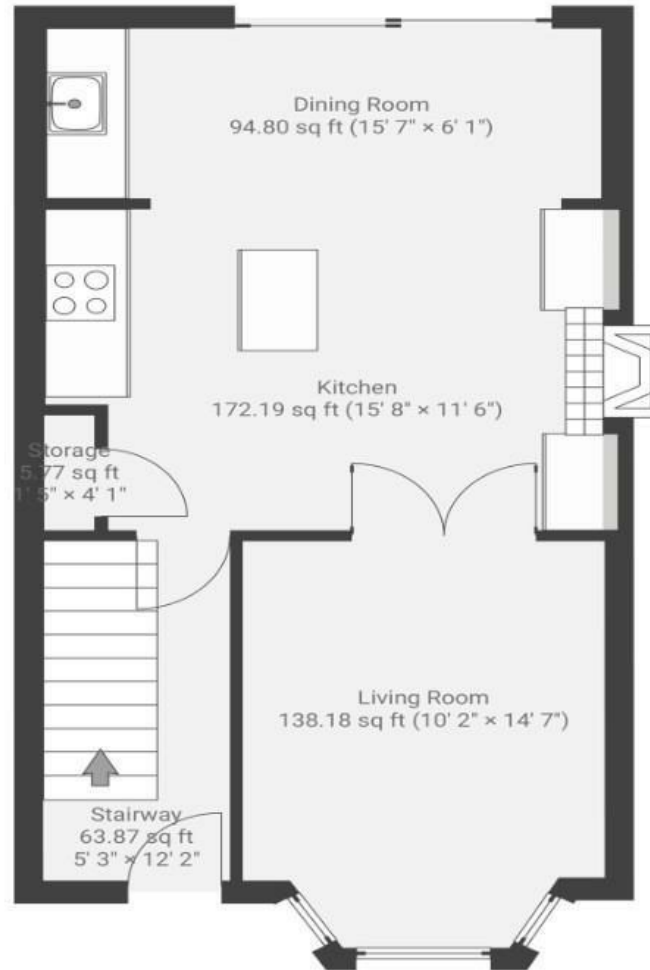
# Sandholme Road

## BRISLINGTON

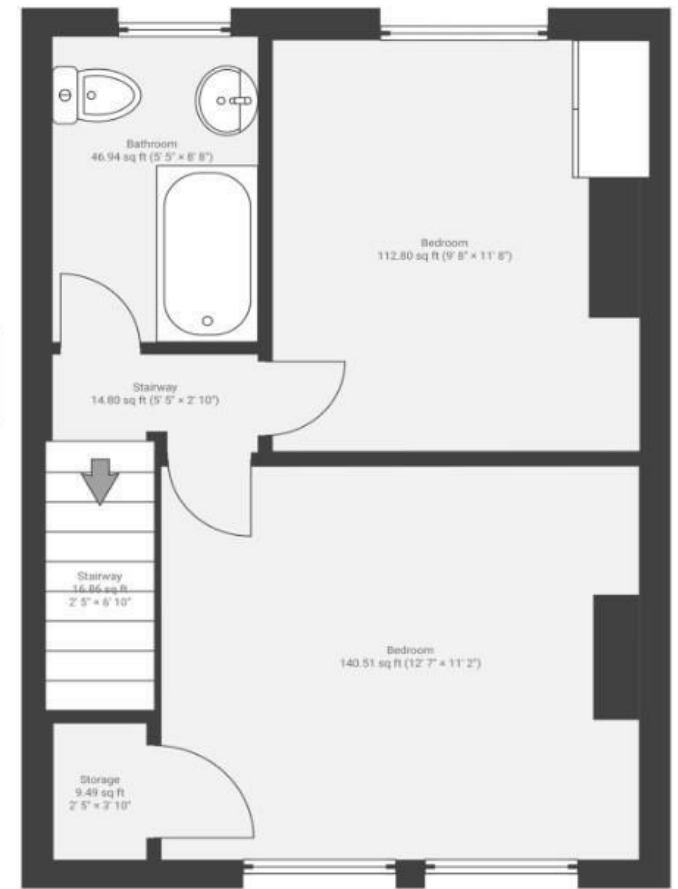
APPROXIMATE FLOOR AREA  
80.0 SQM / 861 SQFT



GROUND FLOOR



FIRST FLOOR



Illustrations are for reference purposes only, measurements are approximate, not to scale.

**Boardwalk**

# Sandholme Road

, BRISTOL

£

£425,000

zzz

2 Bedrooms



BS4 3RX



1 Bathrooms

" We feel very connected to central Bristol but are also able to make the most of the amazing countryside on our fingertips. Our favourite walks include Freshford, Compton Dando and Newton St Loe. We love venturing out to The Deli, Kin or Catleys for a good coffee at the weekend. Sandy Park Greengrocers has delicious produce. Miro Lounge and Pukka Peacock also give you the option of a good meal out without venturing into town. "

